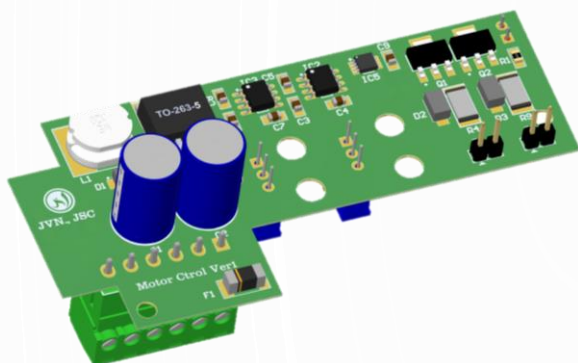


# LED CONTROLLER



## 1. Description

- PWM DC Led Controller 12V 24V.
- Input: 12-24VDC
- Output max: 7A.
- Use MOSFET N-Channel.
- Output power: 120W

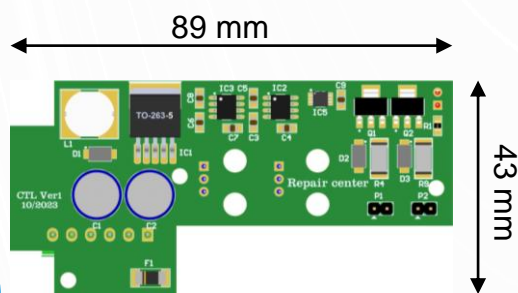
## 2. Feature

- L x W: 89 x 43 mm.
- Input Signal 24VDC
- Terminal 3.81 mm strip for power and controller signal.
- 2 Jump 2.54mm for 2 output.

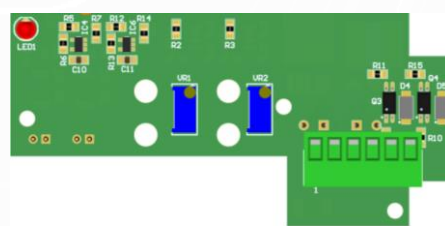
## 3. Application

- Led controller 12-24V DC.

## 4. Dimetion



Top View



Bottom View